



Perth  
hub





Aerial view of Perth Hub and the Perth City Link precinct. Artist's impression

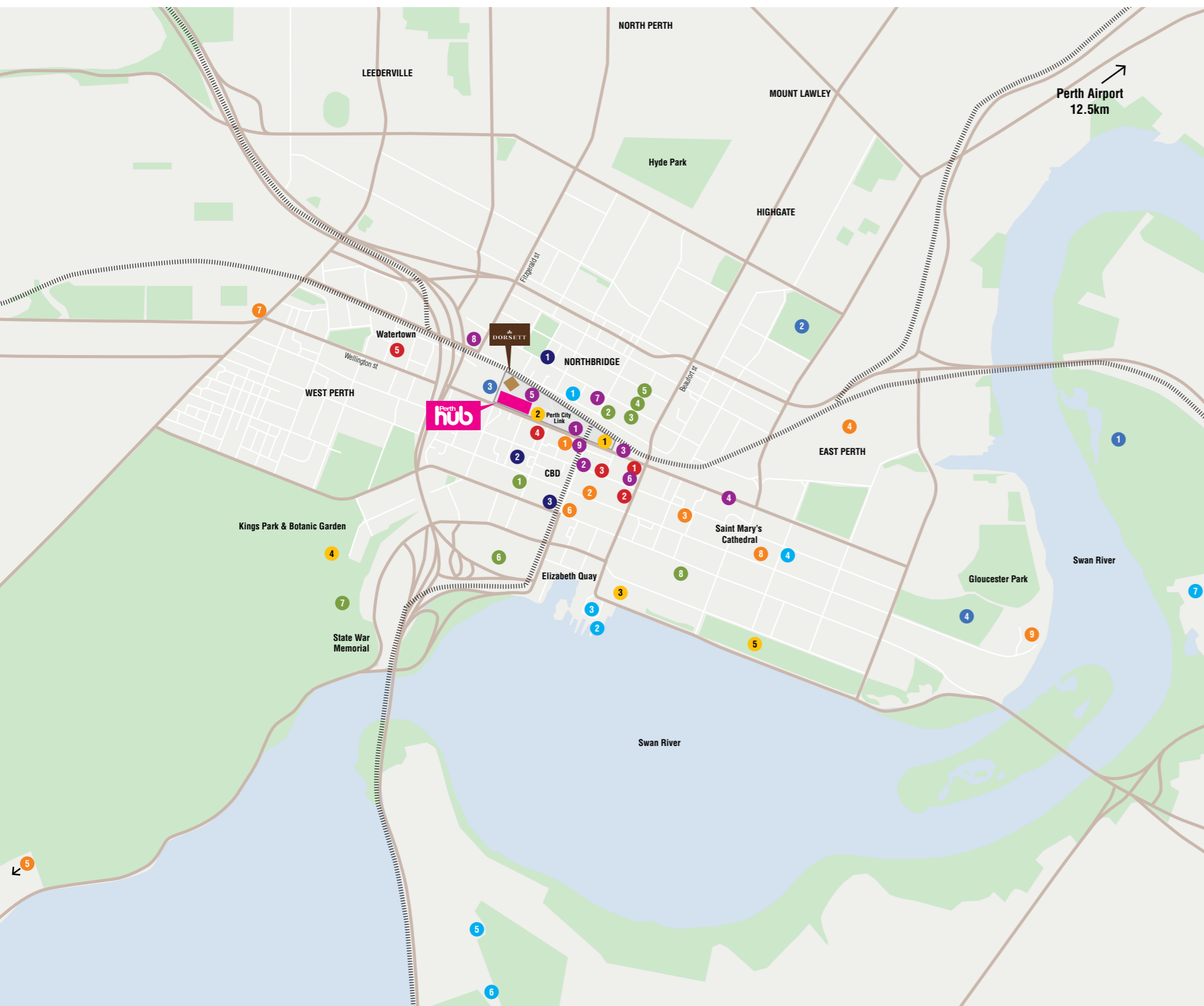
## IT ALL LEADS HERE

Perth Hub will fuse old and new by connecting the lively suburb of Northbridge with Perth's vibrant CBD for the first time in 100 years. And it will do it in style.

Positioned at the western end of Perth City Link precinct, Perth Hub will be the perfect combination of contemporary residential accommodation, world class arts and entertainment, shopping and dining, lush gardens, bustling squares and an extensive transport network on your doorstep – a true celebration of the very best that city living has to offer.

World-regarded pristine beaches are also easily accessed from this lively precinct.





# THE LOCATION

It's all right there, within easy walking distance, making every aspect of your life that little bit easier and more enticing. The buzzing café and restaurant culture of Northbridge is strolling distance away, as is Yagan Square, RAC Arena Perth and your office in the city. Heading further afield, trains, buses and bike paths are just metres from your front door.

## SHOPPING AND RETAIL

1. Myer 1km
2. David Jones 950m
3. Zara 650m
4. King Street Precinct 400m
  - a. Alpha 60
  - b. Borgioli Luxury Menswear
  - c. Chanel
  - d. Cult Status
  - e. Gucci
  - f. Louis Vuitton
  - g. Miu Miu
  - h. Prada
  - i. Zomp Shoes
5. Watertown Shopping Centre 750m

## SPORTS GROUNDS & STADIUMS

1. Optus Stadium 4.4km
2. NIB Stadium 2.1km
3. RAC Arena Perth 50m
4. WACA Cricket Ground 2.7km

## PUBLIC SPACES & GARDENS

1. Yagan Square 500m
2. Kings Square 10m
3. Supreme Court Gardens 1.7km
4. Kings Park & Botanic Garden 1km
5. Langley Park 2.5km

## ARTS

1. His Majesty's Theatre 600m
2. State Theatre Centre 700m
3. Art Gallery of WA 850m
4. State Library of Western Australia 1km
5. Museum of Perth 1.4km
6. Perth Convention and Exhibition Centre 1km
7. Aboriginal Art Gallery 1.7km
8. Perth Concert Hall 1.7km

## LEISURE

1. Rooftop Movies 550m
2. Rottneet Island Ferry 1.6km
3. The Perth Bell Tower 1.7km
4. The Perth Mint 2.1km
5. Perth Zoo 3.7km
6. Royal Perth Golf Course 4.5km
7. Crown Perth 5.3km

## RESTAURANTS & BARS

1. **Northbridge Precinct 400m**  
The vibrant Northbridge area is home to some of Perth's best dining and nightlife venues.
2. **King Street Dining Precinct 500m**  
The newly developed King Street precinct is home to luxury boutiques, dining experiences and bars.
3. **CBD (500m) and Elizabeth Quay (1.5km)**  
Home to some of Perth's finest dining including Wildflower, C Restaurant in the Sky and The Stables.

## EDUCATION

### UNIVERSITIES

Most major university campuses are accessible from the Perth Hub train stations and Busport. This includes Curtin University (9.8km), Murdoch University (16km) and The University of Notre Dame (18km).

1. EF International Language School Campus 500m
2. Institute of Health & Nursing Australia 1km
3. Curtin University Law School 1.3km
4. TAFE International Western Australia 2.1km
5. The University of Western Australia 5.5km

### SECONDARY SCHOOLS

6. St George's Grammar School 850m
7. Perth Modern School 1.4km
8. Mercedes College 1.6km
9. Trinity Boys College 3.3km

## TRANSPORT & AMENITIES

1. Busport 400m
2. Perth Underground Train Station 550m
3. Perth Station 650m
4. Royal Perth Hospital 1.3km
5. Surge Fitness CBD 230m
6. Goodlife Health Club 950m
7. Kakulas Brothers 800m
8. Lion Oriental Foods Co. 850m
9. Coles 450m



■ Future FEC Developments  
 ■ Future Developments  
 ■ Public Areas/Attractions  
 ■ Kings Square Developments

## YOUR PRECINCT. YOUR HOME.

Perth Hub occupies the city block bordered by Wellington, Milligan, Maaman Streets and Telethon Avenue, and will offer residents and visitors a unique urban lifestyle experience to rival the world's most iconic cities.

Located to the west is RAC Arena Perth (formerly Perth Arena), WA's landmark home of live entertainment, music and sports events.

To the north lies Milligan Steps, a vibrant pedestrian-only 'Spanish steps' style plaza that bridges Perth City to the vibrant entertainment district of Northbridge. The vision for Milligan Steps is a hub of restaurants, cafes and bars.

Kings Square encompasses the eastern corner with its commercial headquarters, Wellington Gardens' urban landscapes and its laneways of restaurants, cafes and bars. Slightly further east is Yagan Square – Perth's latest attraction and 'the' place to meet, eat, shop and play.

Wellington Street, a tree-lined boulevard running west-east with free city loop bus stops and dedicated cycle paths, forms the southern border. From here you can literally step into the Perth CBD.



## THE DORSETT HOTEL PERTH

Perth Hub's 23-storey neighbour, the international 4½ star Dorsett hotel will comprise of 263 hotel rooms, a ground entry lobby with lounge, and a mezzanine level restaurant for all-day dining. Guests will enjoy an outdoor pool, the club lounge, gymnasium and garden terrace making it the perfect accommodation for visiting family or international guests.

## HOTELS WORLDWIDE AND AUSTRALIA

Dorsett Hospitality is an international group of awarded hotels that balance chic, charismatic design with great value in prime locations. It is one of Asia's fastest-growing hotel groups with 33 hotels in key centres across Asia, including Hong Kong, China, Malaysia and Singapore, as well as in the UK. The introduction of Dorsett into Perth is part of a national expansion across the country, with future locations planned throughout major cities including Brisbane, Gold Coast and Melbourne.



Hotel swimming pool. Dorsett Kuala Lumpur

  
**DORSETT**

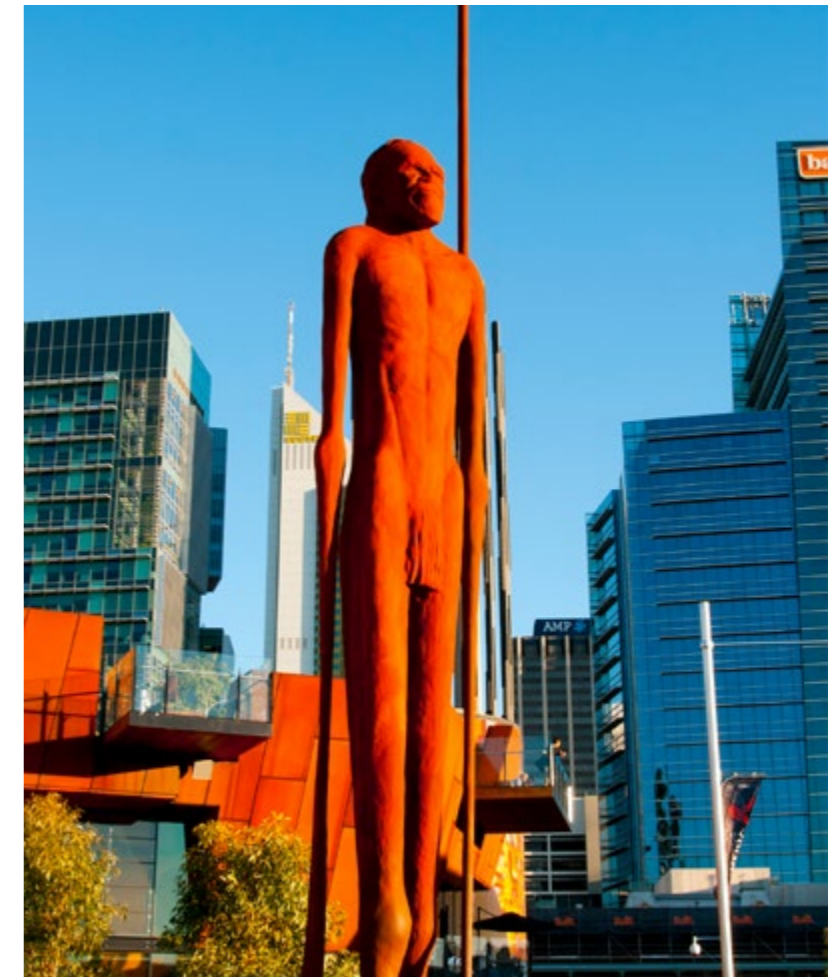




## RAC ARENA PERTH

This venue is widely reported as Australia's finest, which comes as no surprise as it is operated by the same team behind the globally-acclaimed Staples Center in LA. A capacity of just 15,000 ensures an intimate experience with wow factor, amongst breath-taking architectural design and state-of-the-art technology, this is the place to witness your stars in action. RAC Arena Perth serves as a perfectly accessible entertainment venue for Perth's South-East Asian neighbours, attracting the biggest stars and acts from around the globe and thousands of international visitors every year.





## YAGAN SQUARE

Yagan Square is a meeting point for the people of Perth. Uniting them in a sensory spectacle of dining, relaxation and entertainment. Visitors can indulge in a plethora of restaurants, shopping, markets, festivals and events, or simply enjoy the convenience of a direct link with the city's public transport network.





TO THE NORTH IS MILLIGAN  
STEPS, A VIBRANT PEDESTRIAN-  
ONLY 'SPANISH STEPS' STYLE  
PLAZA THAT CONNECTS PERTH  
CBD TO NORTHBRIDGE AND  
PLAYS HOST TO A HUB OF  
RESTAURANTS, CAFES AND BARS.





Perth Hub tower exterior Artist's impression

## ARCHITECTURE INSPIRED BY THE ENVIRONMENT

The architectural design is contemporary, sculptural and unique whilst drawing on the context of its nearby city landmarks – the geometric forms of RAC Arena Perth to the west, the glass towers of Kings Square and the organic contours of Yagan Square to the east.

The tower is envisaged as a polished and crystalline glass jewel. It is elegant and timeless, capturing changing 'dappled reflections' of Perth's city skyline, famous clear blue skies and stunning sunsets.

The podium is grand and civic in nature, reflecting the scale of the RAC Arena Perth, as well as its prime position on the Wellington Street boulevard. The precast concrete has a robust honest materiality with textural references to the fine pitting and layering of peeling paperbark trees – which were the site's native flora centuries ago. This is contrasted with the delicate 'strata seams' of glass and perforated metal of the concealed carpark openings.

## CITY LIVING AT ITS BEST

Designed by Cottee Parker Architects, Perth Hub will provide thirty levels of contemporary, residential apartments in the heart of Perth. A seven-storey podium will sit at the base of the tower, which will conveniently incorporate resident amenities, car parking, commercial and retail spaces. A lush sky garden waistband will separate the podium from the residential tower, completing this ultimate city-living package.



RESIDENTS WILL  
ENTER THE  
RESIDENTIAL TOWER  
VIA A SPECTACULAR  
6m HIGH HOTEL-LIKE  
LOBBY, WITH BACKLIT  
FEATURE GLASS  
LANTERN AND DESIGN  
REFERENCES TO THE  
STIE'S HISTORY.

Perth  
hub



# AMENITIES





Level 7 residential amenities – outdoor pool Artist's impression

## THE SKY IS THE LIMIT

Arriving at the Level 7 skygarden, residents are transported into a city resort with approximately 1400m<sup>2</sup> of amenities. Residents can enjoy the retreat environment whilst having prime views overlooking onto RAC Arena Perth, Milligan Steps and back to the city skyline.





## TUNE OUT FROM IT ALL

### Level 7 residential amenities include:

- Residents' private dining room including full kitchen
- Residents' lounge with large screen TV and fireplace
- Garden terraces
- BBQ pavilion
- Outdoor pool and landscaped pool deck
- Sauna room
- Gymnasium including yoga and pilates room
- Communal orchard garden with citrus planting and herb garden
- Bathroom facilities

Level 7 residential amenities – aerial view of outdoor pool and landscaped deck Artist's impression





Level 7 residential amenities – private dining room Artist's impression



APARTMENTS









Perth Hub apartment interior – typical kitchen Artist's impression





Perth Hub apartment interior – typical bathroom Artist's impression

## DESIGN PERFECTION

You have the choice of one, two and three-bedroom apartments. Each enjoy floor to ceiling windows for light-filled spaces, most with views across Northbridge, RAC Arena Perth, and Perth's CBD. Glimpses of Swan River and Kings Park can also be enjoyed by some.

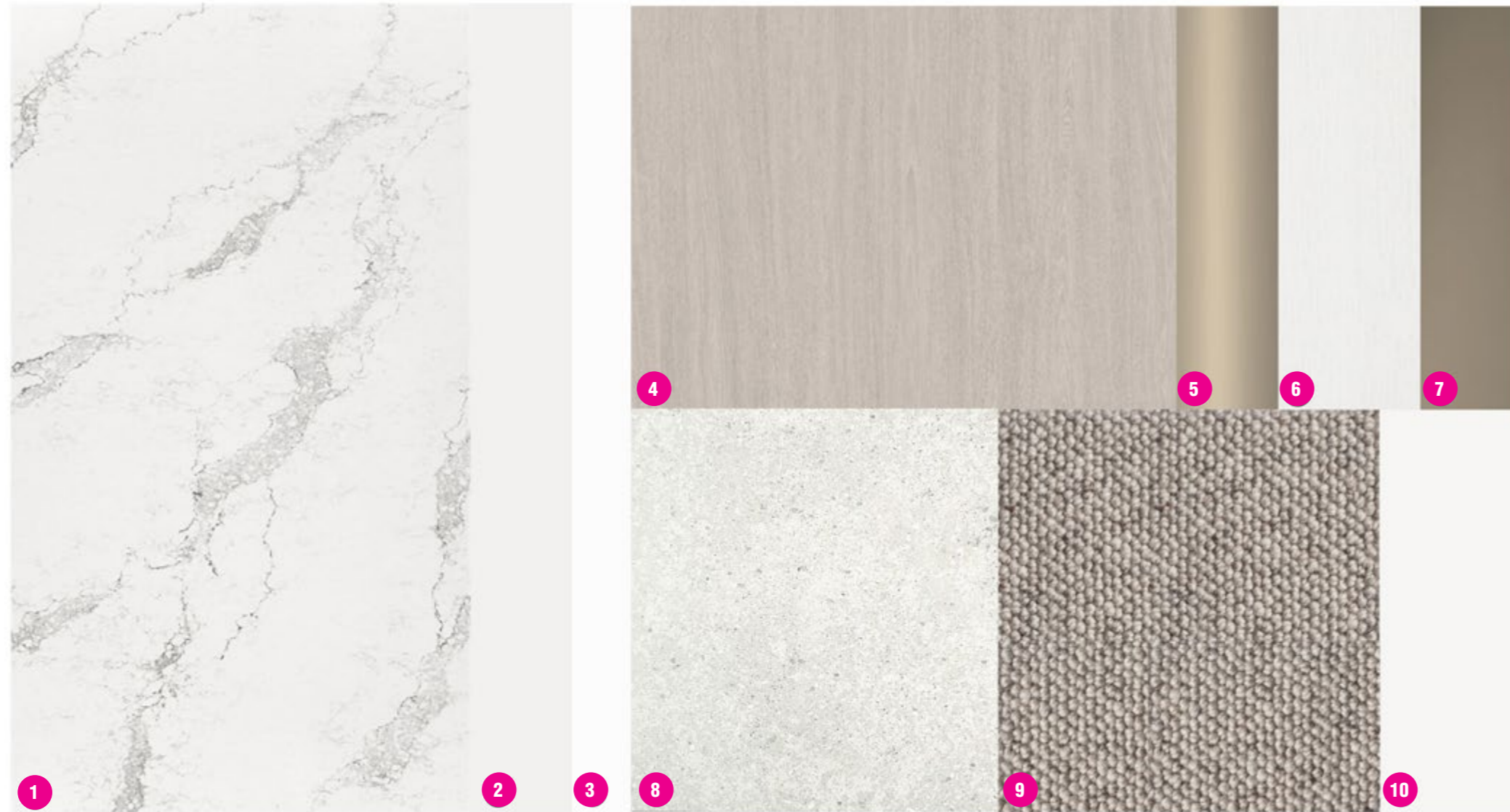
Tower apartments from Levels 8-30 will also feature winter gardens complete with automated lift-and-tilt windows.

Owners will have the option to choose from either the Shell (light) or Granite (dark) colour scheme for their interior design fit-out. Apartment finishes and colour palettes have been carefully selected to create a sense of calm and comfort. Kitchens feature stone benchtops and splashbacks, gas cook tops and feature shelving. Tiled flooring and elevated ceiling heights of 2650mm create a sense of space and openness throughout.



# INTERIOR FINISHES

## SHELL (LIGHT SCHEME)

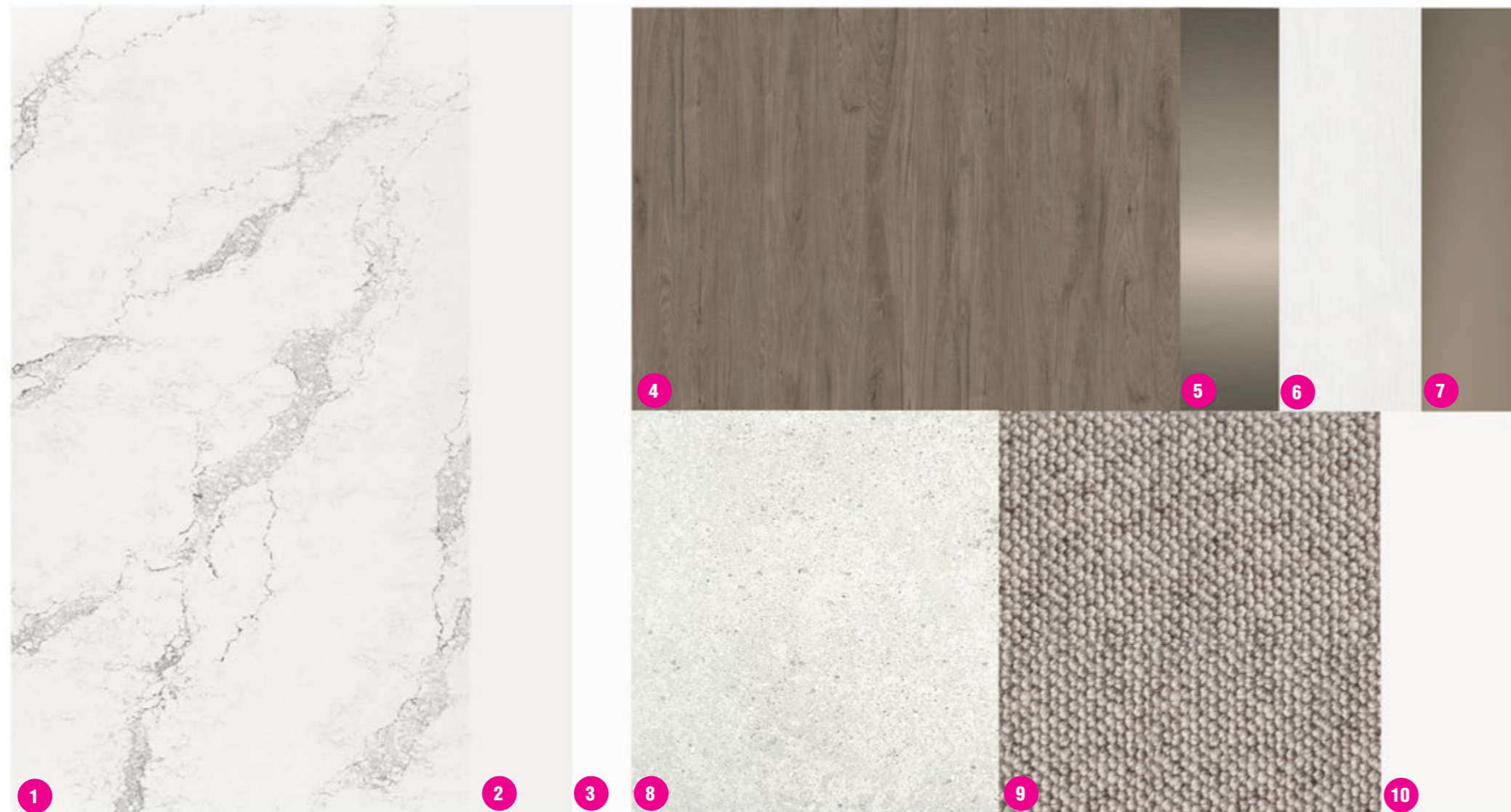


- 1 RECONSTITUTED STONE BENCHTOP
- 2 WALL PAINT
- 3 CEILING PAINT
- 4 MELAMINE JOINERY
- 5 JOINERY TRIMS
- 6 JOINERY MELAMINE
- 7 MIRROR
- 8 FLOOR TILES
- 9 CARPET
- 10 WALL TILES



# INTERIOR FINISHES

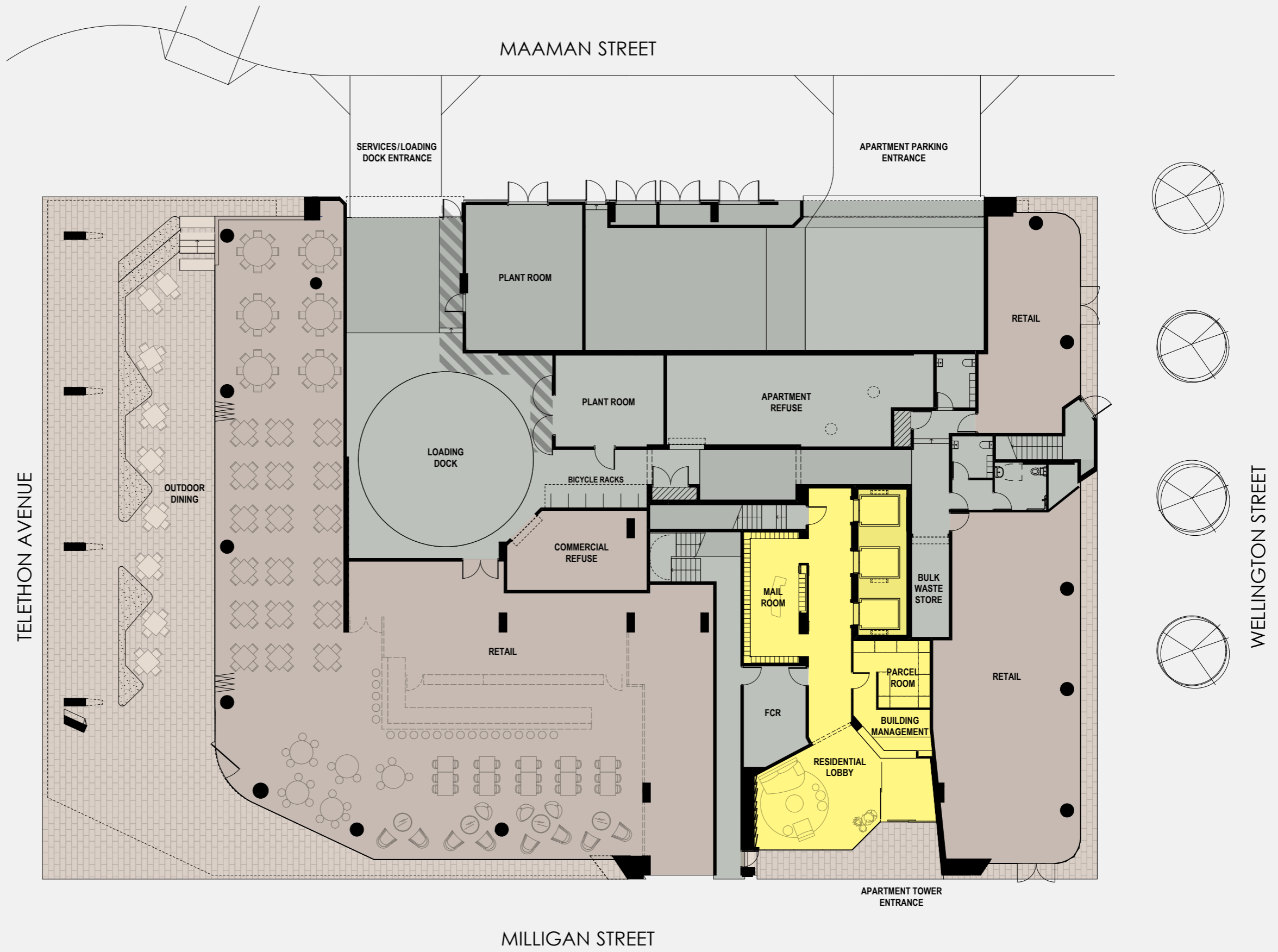
## GRANITE (DARK SCHEME)



- 1 RECONSTITUTED STONE BENCHTOP
- 2 WALL PAINT
- 3 CEILING PAINT
- 4 MELAMINE JOINERY
- 5 JOINERY TRIMS
- 6 JOINERY MELAMINE
- 7 MIRROR
- 8 FLOOR TILES
- 9 CARPET
- 10 WALL TILES



## GROUND FLOOR



**DISCLAIMER**

The plans and drawings contained in this document are indicative plans and used for illustration purposes only and should not be relied on by any party for the purchase of the lots at the development. The Contract of Sale for the development contains the plans and drawings to be relied on by the parties for the sale and purchase of the relevant lot. Openings and windows within the facade may vary in apartments dependant on location in building and various facade expressions.



## LEVEL | 1

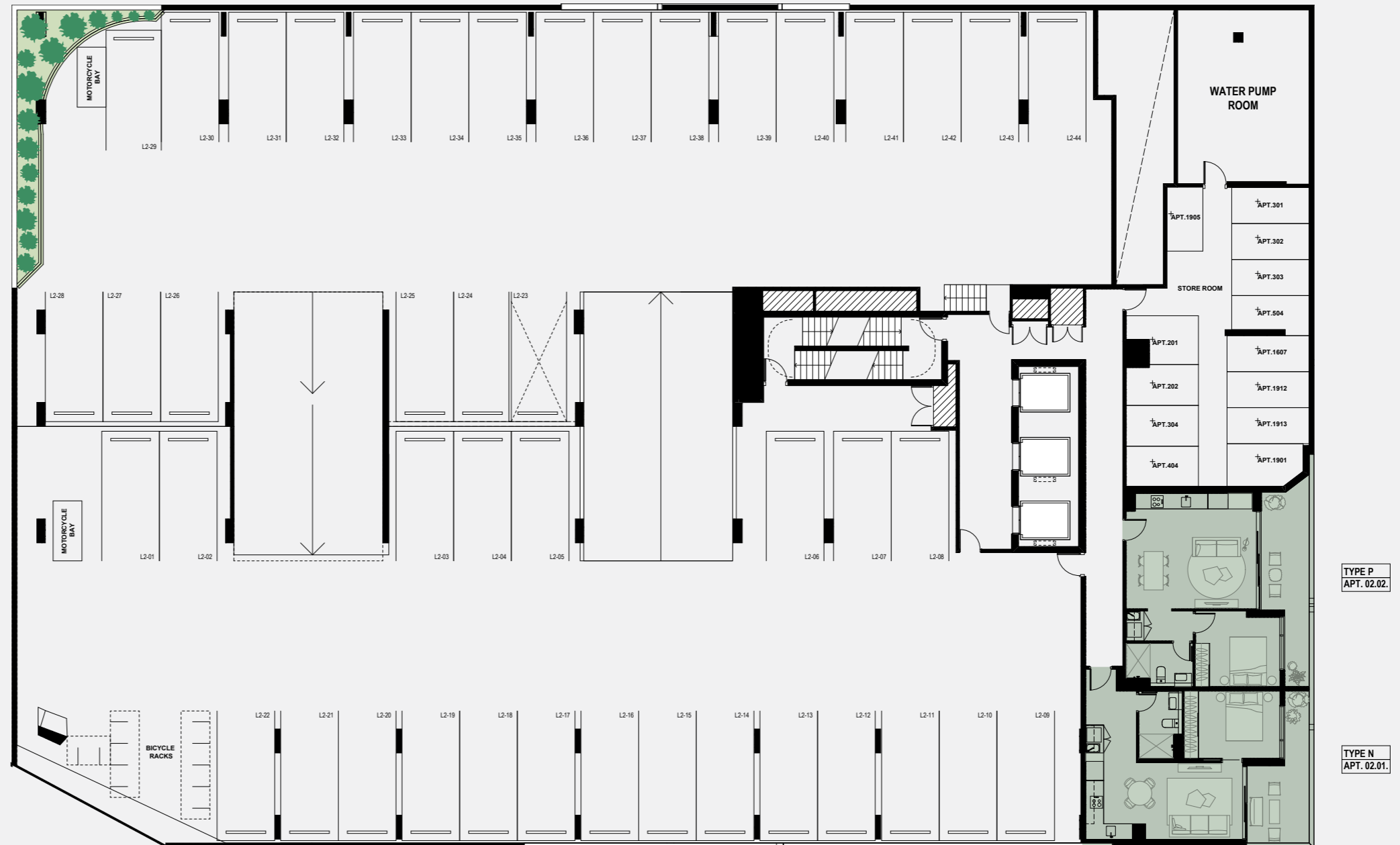


### DISCLAIMER

The plans and drawings contained in this document are indicative plans and used for illustration purposes only and should not be relied on by any party for the purchase of the lots at the development. The Contract of Sale for the development contains the plans and drawings to be relied on by the parties for the sale and purchase of the relevant lot. Openings and windows within the facade may vary in apartments dependant on location in building and various facade expressions.



## LEVEL | 2



■ ONE BEDROOM APARTMENT

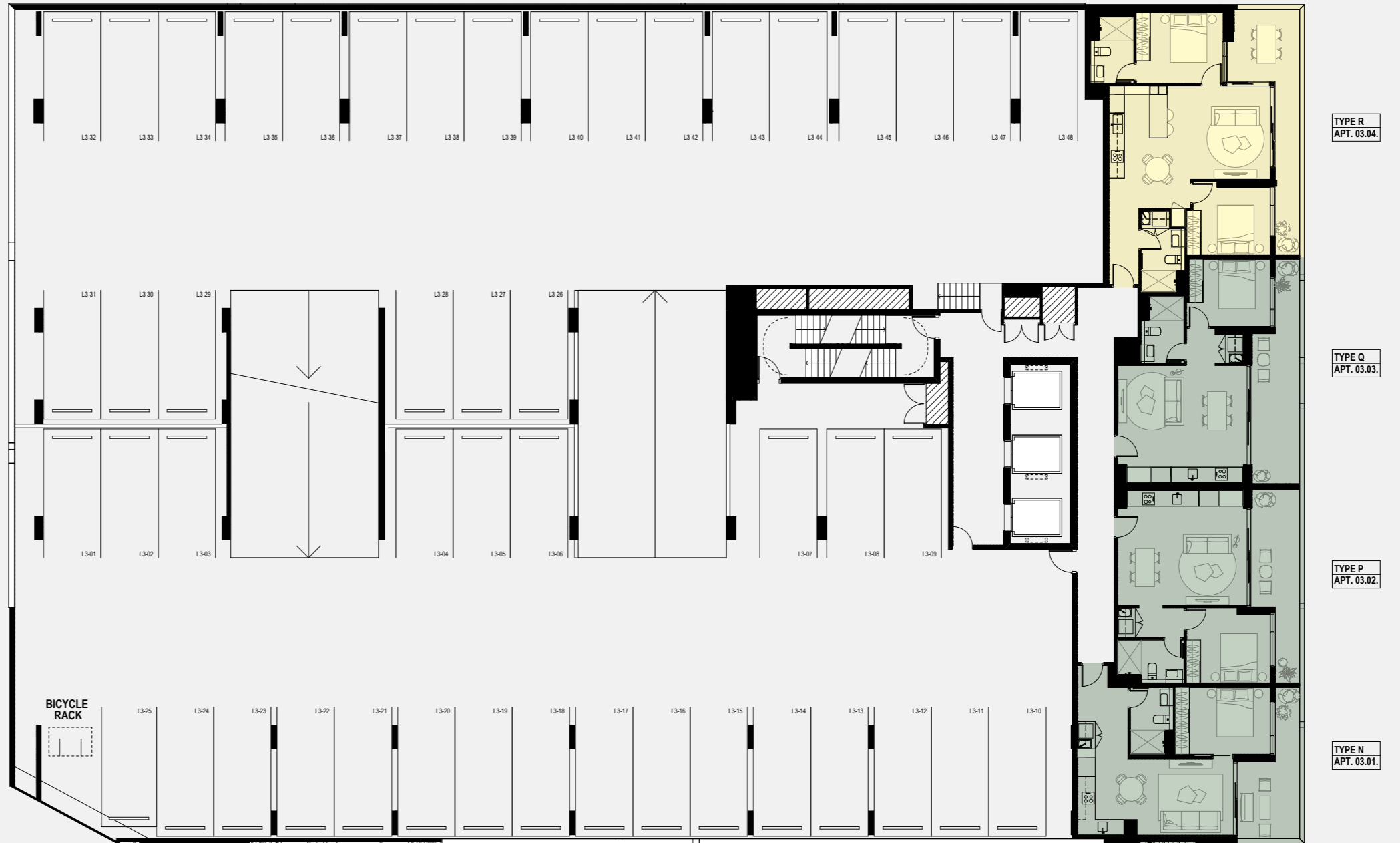


### DISCLAIMER

The plans and drawings contained in this document are indicative plans and used for illustration purposes only and should not be relied on by any party for the purchase of the lots at the development. The Contract of Sale for the development contains the plans and drawings to be relied on by the parties for the sale and purchase of the relevant lot. Openings and windows within the facade may vary in apartments dependant on location in building and various facade expressions.



## LEVEL | 3



- ONE BEDROOM APARTMENT
- TWO BEDROOM APARTMENT

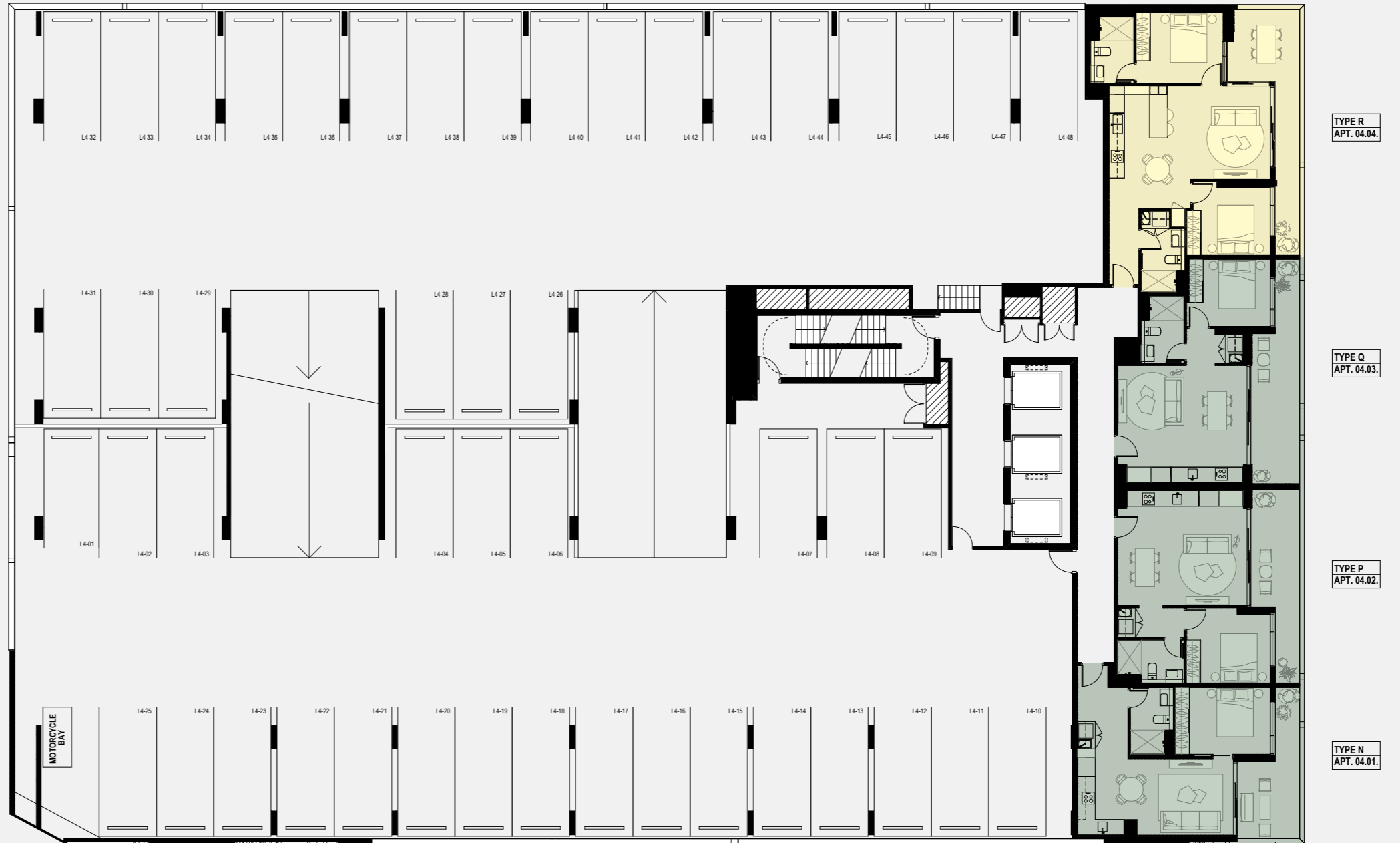


**DISCLAIMER**

The plans and drawings contained in this document are indicative plans and used for illustration purposes only and should not be relied on by any party for the purchase of the lots at the development. The Contract of Sale for the development contains the plans and drawings to be relied on by the parties for the sale and purchase of the relevant lot. Openings and windows within the facade may vary in apartments dependant on location in building and various facade expressions.



## LEVEL | 4



- ONE BEDROOM APARTMENT
- TWO BEDROOM APARTMENT



**DISCLAIMER**

The plans and drawings contained in this document are indicative plans and used for illustration purposes only and should not be relied on by any party for the purchase of the lots at the development. The Contract of Sale for the development contains the plans and drawings to be relied on by the parties for the sale and purchase of the relevant lot. Openings and windows within the facade may vary in apartments dependant on location in building and various facade expressions.



## LEVEL | 5



- ONE BEDROOM APARTMENT
- TWO BEDROOM APARTMENT

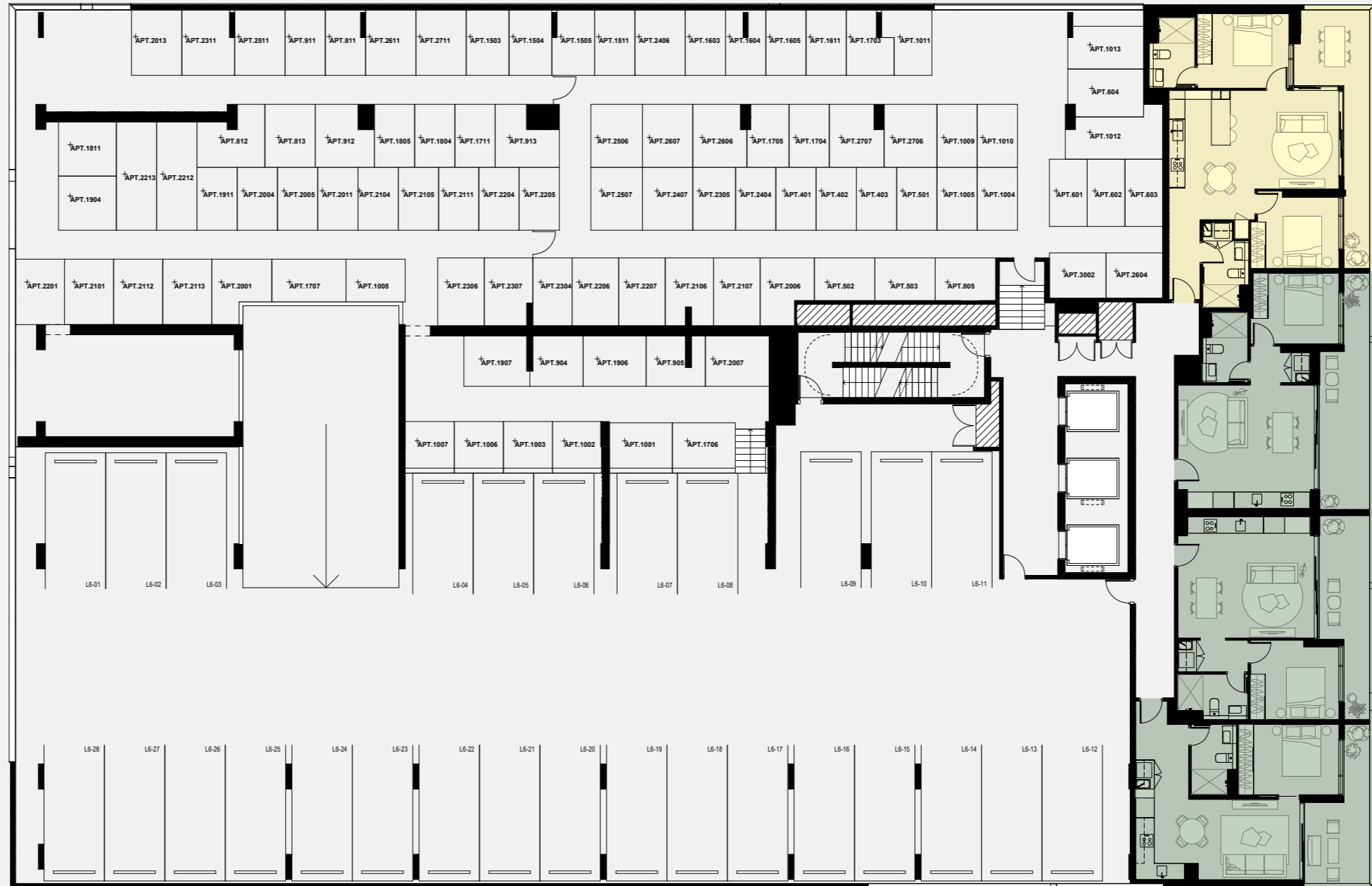


### DISCLAIMER

The plans and drawings contained in this document are indicative plans and used for illustration purposes only and should not be relied on by any party for the purchase of the lots at the development. The Contract of Sale for the development contains the plans and drawings to be relied on by the parties for the sale and purchase of the relevant lot. Openings and windows within the facade may vary in apartments dependant on location in building and various facade expressions.



## LEVEL | 6



TYPE R  
APT. 06.04.

TYPE Q  
APT. 06.03.

TYPE P  
APT. 06.02.

TYPE N  
APT. 06.01.

- ONE BEDROOM APARTMENT
- TWO BEDROOM APARTMENT



**DISCLAIMER**

The plans and drawings contained in this document are indicative plans and used for illustration purposes only and should not be relied on by any party for the purchase of the lots at the development. The Contract of Sale for the development contains the plans and drawings to be relied on by the parties for the sale and purchase of the relevant lot. Openings and windows within the facade may vary in apartments dependant on location in building and various facade expressions.



## LEVEL 17



■ ONE BEDROOM APARTMENT

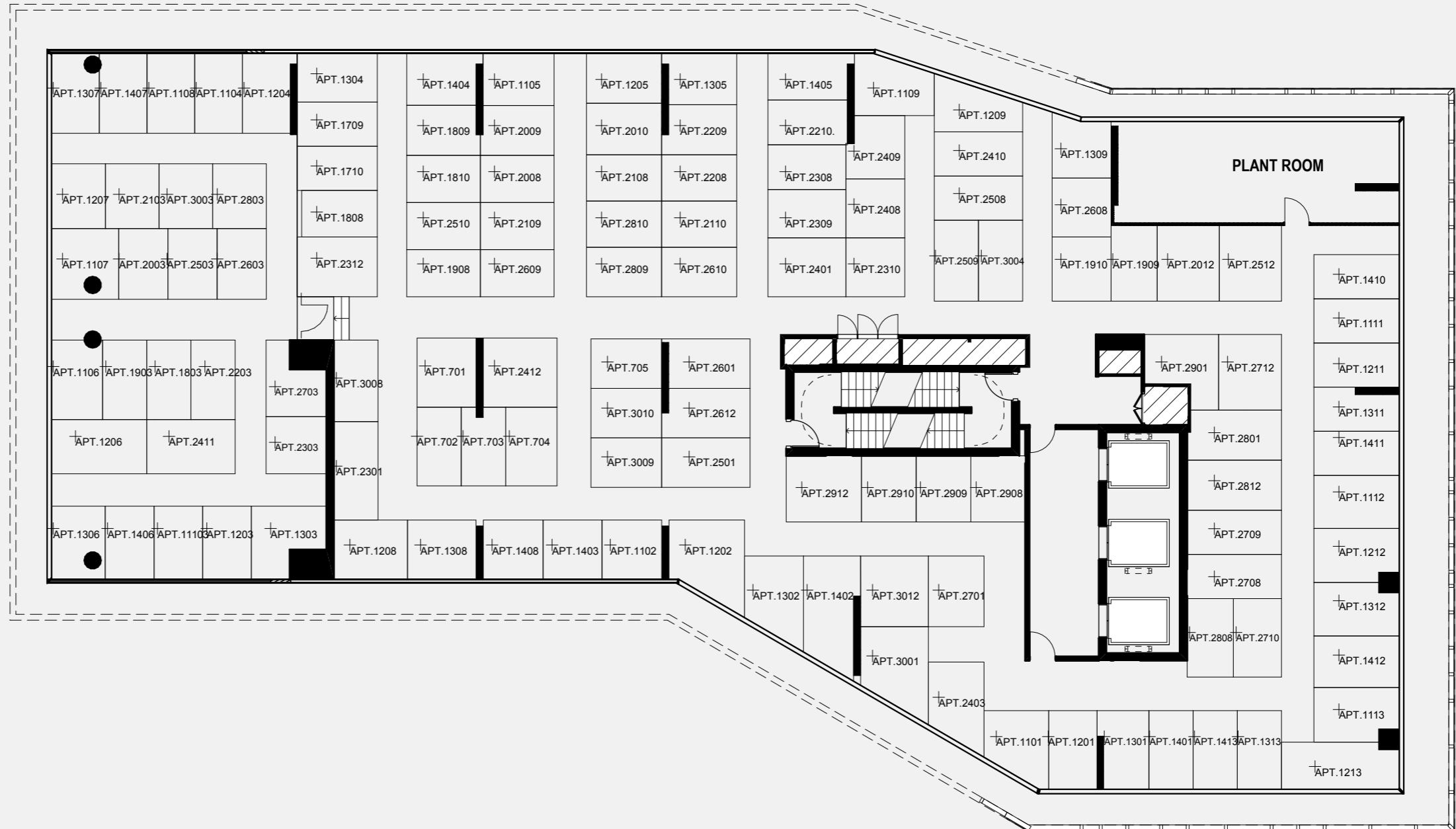


**DISCLAIMER**

The plans and drawings contained in this document are indicative plans and used for illustration purposes only and should not be relied on by any party for the purchase of the lots at the development. The Contract of Sale for the development contains the plans and drawings to be relied on by the parties for the sale and purchase of the relevant lot. Openings and windows within the facade may vary in apartments dependant on location in building and various facade expressions.



## LEVEL | 7A



### DISCLAIMER

The plans and drawings contained in this document are indicative plans and used for illustration purposes only and should not be relied on by any party for the purchase of the lots at the development. The Contract of Sale for the development contains the plans and drawings to be relied on by the parties for the sale and purchase of the relevant lot. Openings and windows within the facade may vary in apartments dependant on location in building and various facade expressions.



## TYPICAL LEVEL

8 | 10 | 11 | 12 | 14 |  
15 | 17 | 20 | 21 | 22



### DISCLAIMER

The plans and drawings contained in this document are indicative plans and used for illustration purposes only and should not be relied on by any party for the purchase of the lots at the development. The Contract of Sale for the development contains the plans and drawings to be relied on by the parties for the sale and purchase of the relevant lot. Openings and windows within the facade may vary in apartments dependant on location in building and various facade expressions.



**TYPICAL LEVEL**  
9 | 13 | 16 | 18 | 19



**DISCLAIMER**

The plans and drawings contained in this document are indicative plans and used for illustration purposes only and should not be relied on by any party for the purchase of the lots at the development. The Contract of Sale for the development contains the plans and drawings to be relied on by the parties for the sale and purchase of the relevant lot. Openings and windows within the facade may vary in apartments dependant on location in building and various facade expressions.



**TYPICAL LEVEL**  
23 | 24 | 26 | 28 |  
29 | 30



- ONE** BEDROOM APARTMENT
- ONE** BEDROOM + STUDY APARTMENT
- TWO** BEDROOM APARTMENT
- THREE** BEDROOM APARTMENT



**DISCLAIMER**

The plans and drawings contained in this document are indicative plans and used for illustration purposes only and should not be relied on by any party for the purchase of the lots at the development. The Contract of Sale for the development contains the plans and drawings to be relied on by the parties for the sale and purchase of the relevant lot. Openings and windows within the facade may vary in apartments dependant on location in building and various facade expressions.



**TYPICAL LEVEL**  
25 | 27



- ONE** BEDROOM APARTMENT
- ONE** BEDROOM + STUDY APARTMENT
- TWO** BEDROOM APARTMENT
- THREE** BEDROOM APARTMENT



**DISCLAIMER**

The plans and drawings contained in this document are indicative plans and used for illustration purposes only and should not be relied on by any party for the purchase of the lots at the development. The Contract of Sale for the development contains the plans and drawings to be relied on by the parties for the sale and purchase of the relevant lot. Openings and windows within the facade may vary in apartments dependant on location in building and various facade expressions.





# TWO BEDROOM APARTMENT

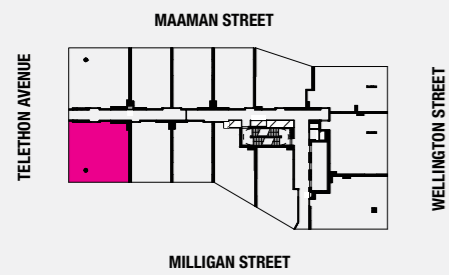
TYPE | B1

Total Area: **83.68 m<sup>2</sup>**

### APARTMENT NUMBER

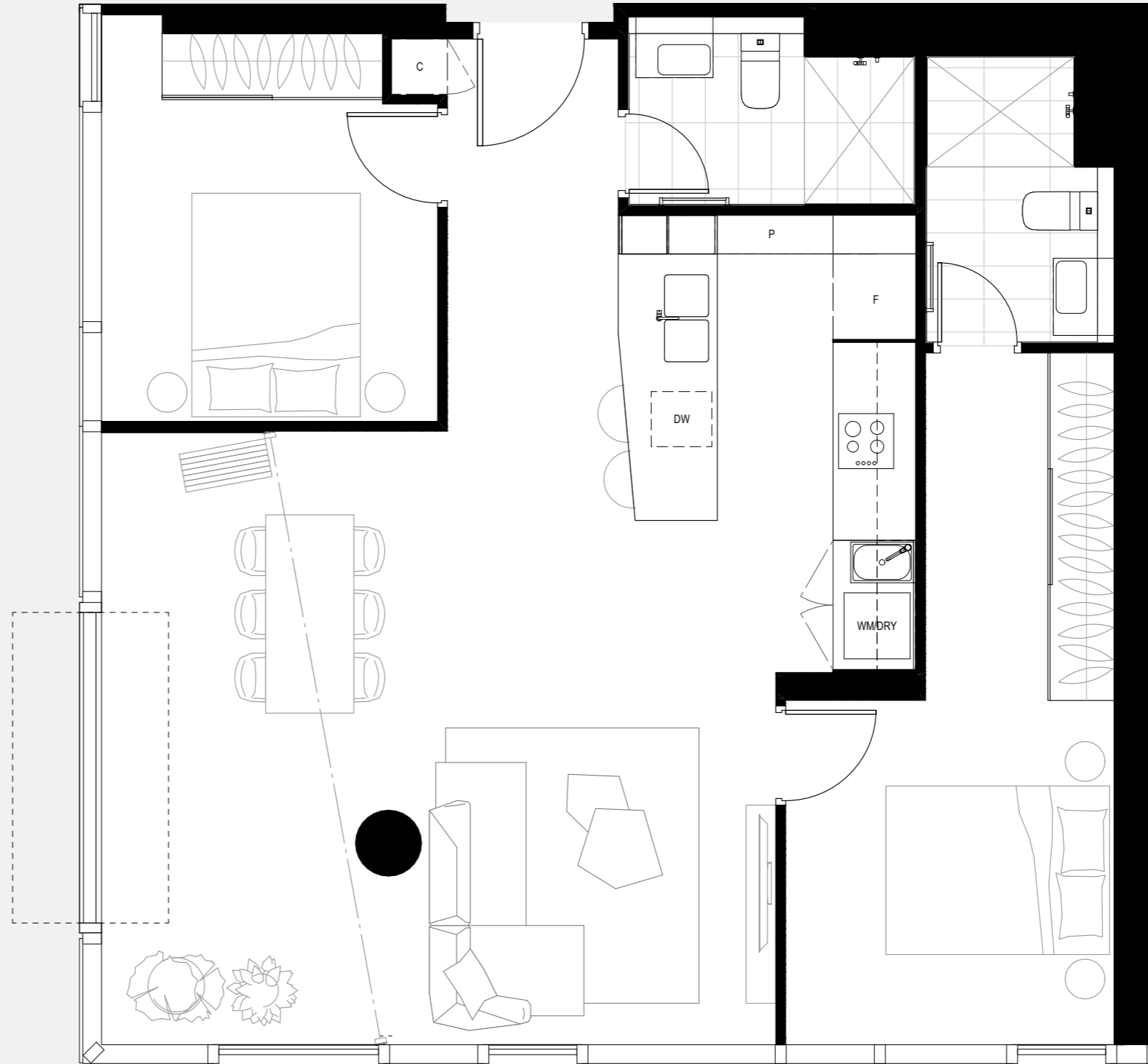
8.06	18.06	28.06
9.06	19.06	29.06
10.06	20.06	30.06
11.06	21.06	
12.06	22.06	
13.06	23.06	
14.06	24.06	
15.06	25.06	
16.06	26.06	
17.06	27.06	

### LOCATION



### DISCLAIMER

The plans and drawings contained in this document are indicative plans and used for illustration purposes only and should not be relied on by any party for the purchase of the lots at the development. The Contract of Sale for the development contains the plans and drawings to be relied on by the parties for the sale and purchase of the relevant lot. Openings and windows within the facade may vary in apartments dependant on location in building and various facade expressions.







# TWO BEDROOM APARTMENT

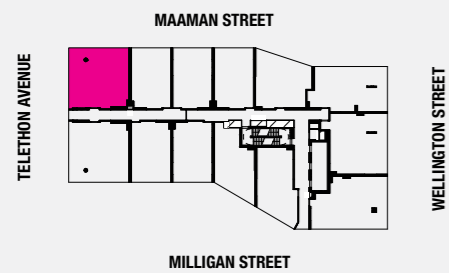
TYPE | B2

Total Area: **83.68 m<sup>2</sup>**

## APARTMENT NUMBER

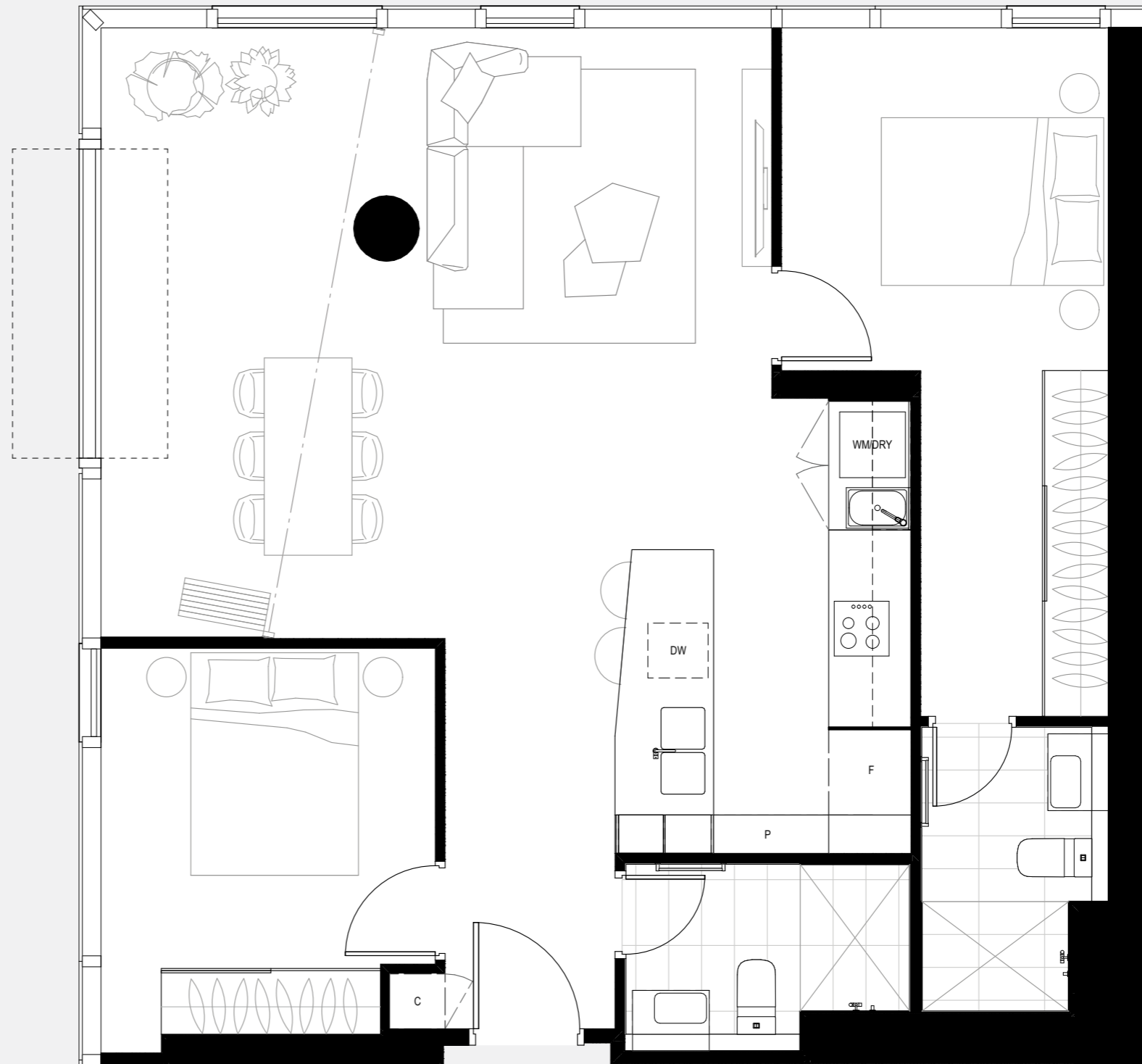
8.07	18.07	28.07
9.07	19.07	29.07
10.07	20.07	30.07
11.07	21.07	
12.07	22.07	
13.07	23.07	
14.07	24.07	
15.07	25.07	
16.07	26.07	
17.07	27.07	

## LOCATION



## DISCLAIMER

The plans and drawings contained in this document are indicative plans and used for illustration purposes only and should not be relied on by any party for the purchase of the lots at the development. The Contract of Sale for the development contains the plans and drawings to be relied on by the parties for the sale and purchase of the relevant lot. Openings and windows within the facade may vary in apartments dependant on location in building and various facade expressions.





## TWO BEDROOM APARTMENT

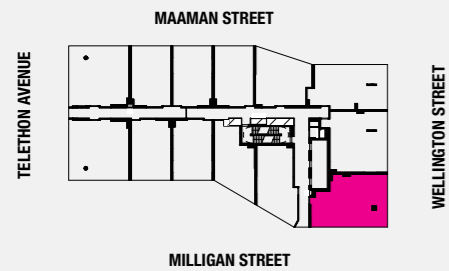
TYPE | E

Total Area: **85.56 m<sup>2</sup>**

### APARTMENT NUMBER

- 8.01 17.01
- 9.01 18.01
- 10.01 19.01
- 11.01 20.01
- 12.01 21.01
- 13.01 22.01
- 14.01
- 15.01
- 16.01

### LOCATION



### DISCLAIMER

The plans and drawings contained in this document are indicative plans and used for illustration purposes only and should not be relied on by any party for the purchase of the lots at the development. The Contract of Sale for the development contains the plans and drawings to be relied on by the parties for the sale and purchase of the relevant lot. Openings and windows within the facade may vary in apartments dependant on location in building and various facade expressions.







# TWO BEDROOM APARTMENT

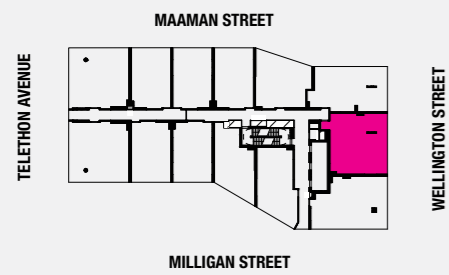
TYPE | F

Total Area: **81.93 m<sup>2</sup>**

### APARTMENT NUMBER

- |       |       |       |
|-------|-------|-------|
| 8.13  | 14.13 | 20.13 |
| 9.13  | 15.13 | 21.13 |
| 10.13 | 16.13 | 22.13 |
| 11.13 | 17.13 |       |
| 12.13 | 18.13 |       |
| 13.13 | 19.13 |       |

### LOCATION



### DISCLAIMER

The plans and drawings contained in this document are indicative plans and used for illustration purposes only and should not be relied on by any party for the purchase of the lots at the development. The Contract of Sale for the development contains the plans and drawings to be relied on by the parties for the sale and purchase of the relevant lot. Openings and windows within the facade may vary in apartments dependant on location in building and various facade expressions.







# TWO BEDROOM APARTMENT

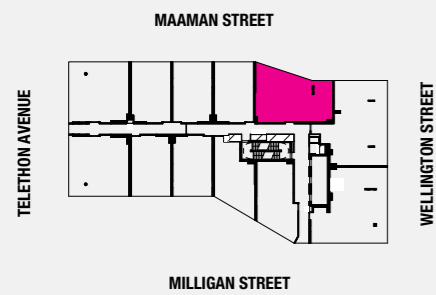
TYPE | S

Total Area: **86.09 m<sup>2</sup>**

## APARTMENT NUMBER

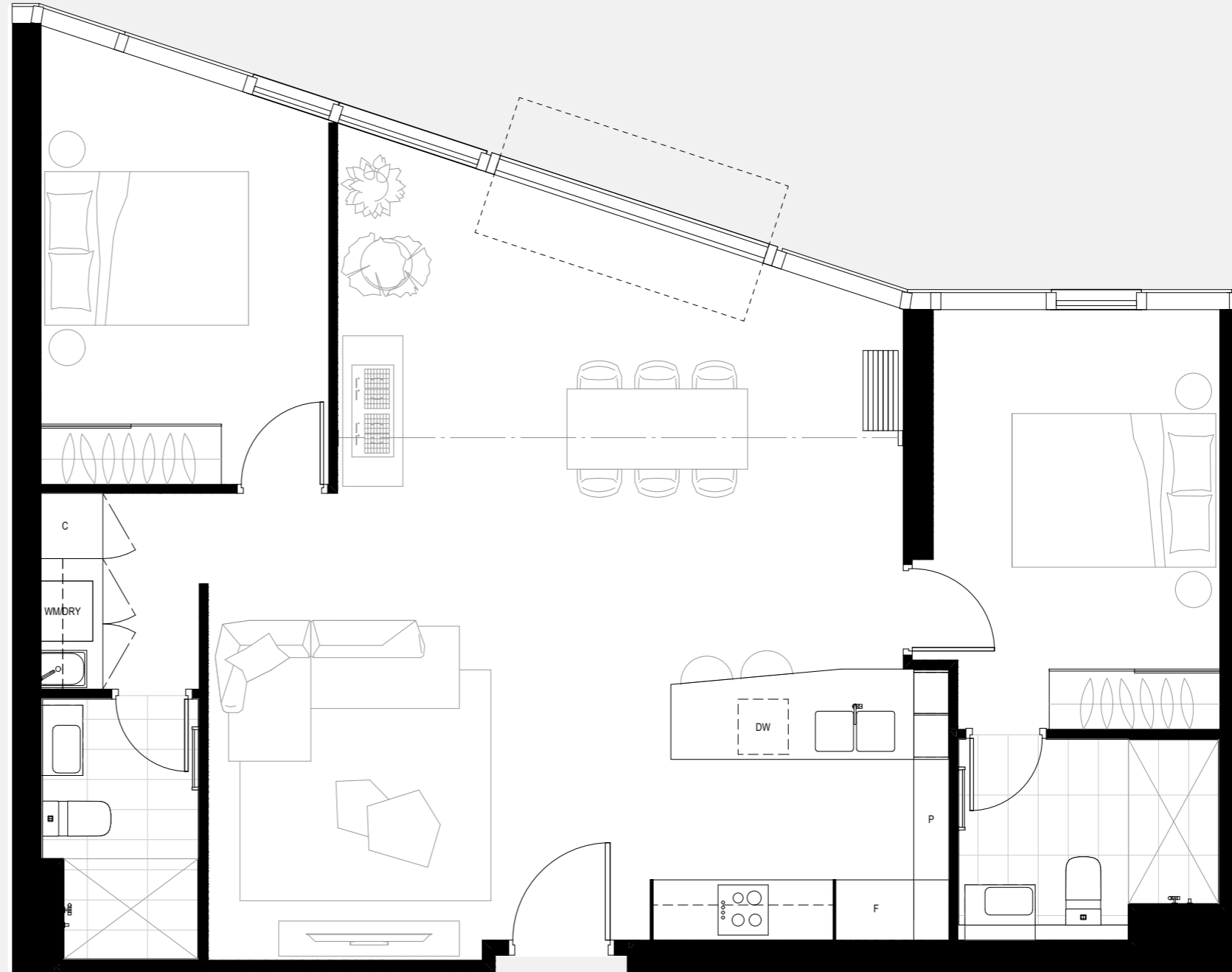
- 23.11 28.11
- 24.11 29.11
- 25.11 30.11
- 26.11
- 27.11

## LOCATION



## DISCLAIMER

The plans and drawings contained in this document are indicative plans and used for illustration purposes only and should not be relied on by any party for the purchase of the lots at the development. The Contract of Sale for the development contains the plans and drawings to be relied on by the parties for the sale and purchase of the relevant lot. Openings and windows within the facade may vary in apartments dependant on location in building and various facade expressions.







# THREE BEDROOM APARTMENT

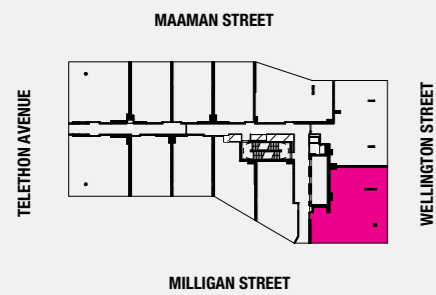
TYPE | X

Total Area: **115.93 m<sup>2</sup>**

## APARTMENT NUMBER

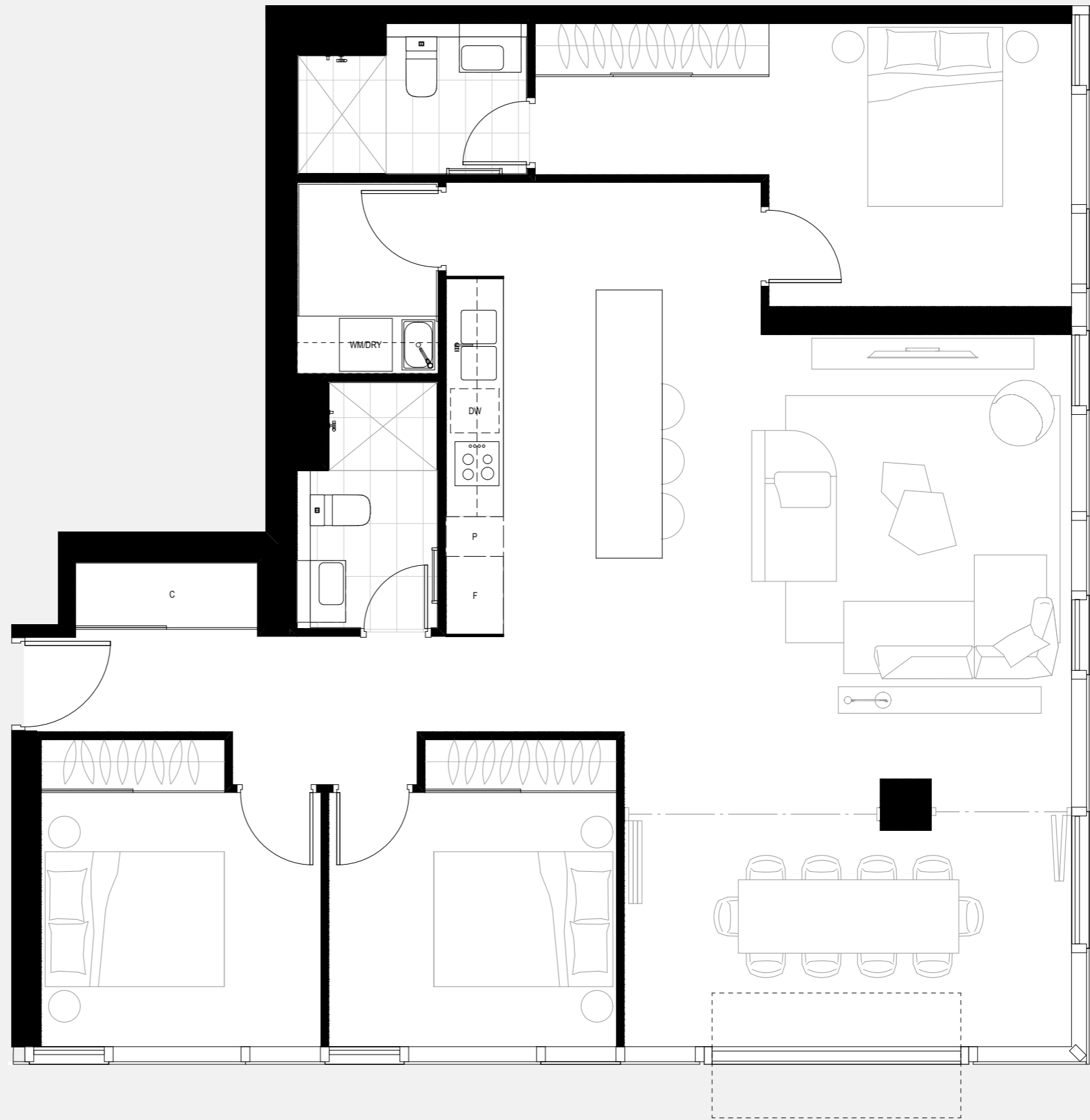
- 23.01 28.01
- 24.01 29.01
- 25.01 30.01
- 26.01
- 27.01

## LOCATION



## DISCLAIMER

The plans and drawings contained in this document are indicative plans and used for illustration purposes only and should not be relied on by any party for the purchase of the lots at the development. The Contract of Sale for the development contains the plans and drawings to be relied on by the parties for the sale and purchase of the relevant lot. Openings and windows within the facade may vary in apartments dependant on location in building and various facade expressions.





# THREE BEDROOM APARTMENT

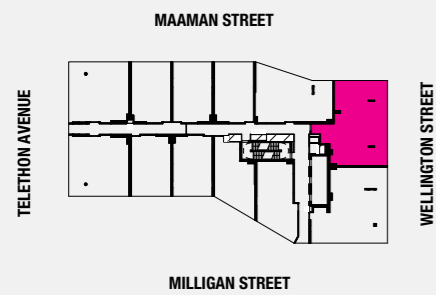
TYPE | Z

Total Area: **113.82 m<sup>2</sup>**

## APARTMENT NUMBER

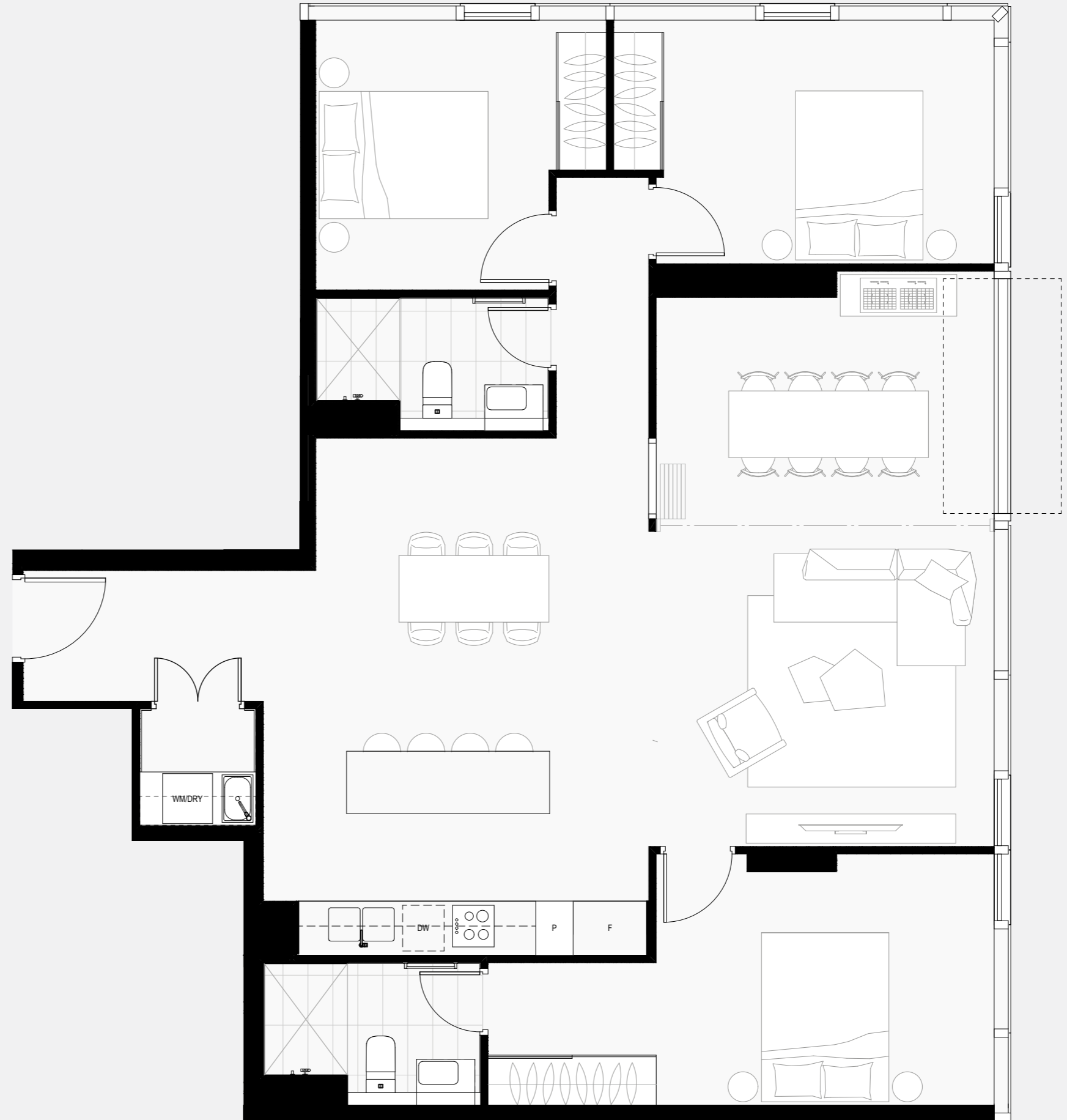
- 23.12 28.12
- 24.12 29.12
- 25.12 30.12
- 26.12
- 27.12

## LOCATION



## DISCLAIMER

The plans and drawings contained in this document are indicative plans and used for illustration purposes only and should not be relied on by any party for the purchase of the lots at the development. The Contract of Sale for the development contains the plans and drawings to be relied on by the parties for the sale and purchase of the relevant lot. Openings and windows within the facade may vary in apartments dependant on location in building and various facade expressions.





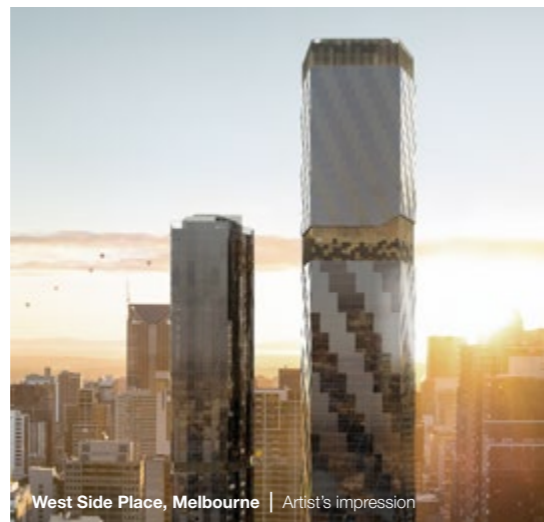


## THE DEVELOPER

Far East Consortium has contributed to Australia's urban skyline for almost 25 years, successfully delivering vast, multifaceted projects in the heart of its major cities. Never daunted by scale or complexity, we see challenges as opportunities when completing landmark multi-billion dollar urban renewal redevelopments.

FEC has built a reputation for developing modern communities that thrive to become increasingly valued over time. Our projects speak for themselves – especially in Melbourne, where its skyline is characterised by many of our

landmark projects, including Regency Towers, Flinders Wharf Apartments, Royal Domain Plaza, Royal Domain Tower, Northbank Place, Upper West Side, The Fifth and West Side Place. FEC's national expansion over recent years sees its portfolio include some of Australia's most iconic and exciting opportunities, including Queen's Wharf Brisbane, The Star Residences Gold Coast, The Towers at Elizabeth Quay Perth, West Side Place Melbourne and The Star Residences Sydney.



### COTTEE PARKER – ARCHITECT



Cottee Parker Architects operates in Melbourne, Perth, Sydney and Brisbane. The practise has extensive experience in delivering unique and considered design solutions for the built environment. With over 25 years of operation the practise has established firm relationships with local planning authorities and is well recognised for its exceptional urban design outcomes. This has enabled Cottee Parker to achieve design solutions for clients well beyond the usual planning constraints. Cottee Parker Architects is one of Australia's leading urban design, architectural, and interior design firms.

### CAPA - LANDSCAPE ARCHITECT



CAPA Landscape Design studio is founded on the belief that landscape is an essential foundation and discipline for projects and environments.

Being a highly collaborative and process guided practice; site, brief, aspirations and user expectations are synthesised into considered and conceptually clear propositions.

CAPA pursue delight in landscapes, with materials that patina over time and softscapes that thrive into the future for a shared experience.

Current landscape projects include Dorsett Hotel in Perth's City Link, Double Tree Hilton Hotel, Cirque Apartments and the awarded ARIA Apartment development.



Asia's Global Real Estate Partner  
A Member of *Juwai IQI*

Sales Enquiry:  
Sales@iqiwa.com.au